

HID KIT PROS.COM

“The Future in Automotive Lighting”

INSTALLATION GUIDE

LumaWerx™ LED Puddle Light Kit

HID Kit Pros
60 NW Gilman Blvd.
Issaquah, WA 98027

sales@hidkitpros.com

www.hidkitpros.com

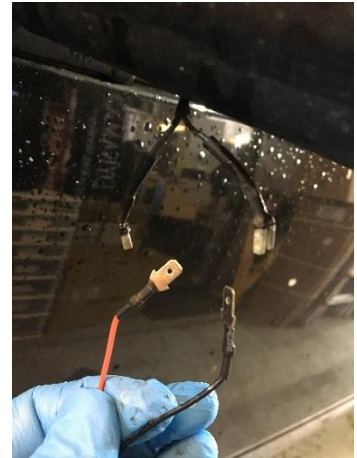
INSTALLATION



Using a small flat head screw driver, release the plastic tab by pushing it toward the factory puddle lamp until it releases.



Remove the spade connectors from the factory wiring on vehicle as shown above; be sure to not let them touch.



Connect the wires of the LED puddle lamps; they are non-polar meaning you can connect either wire to either on the truck.



Wires connected, we recommend insulating wires with heat shrink and/or electrical tape to prevent contacts from touching.



Press "unlock" on your key/remote to ensure illumination. Snap new puddle lamps in and enjoy!